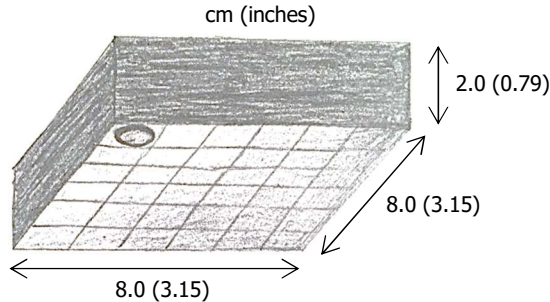
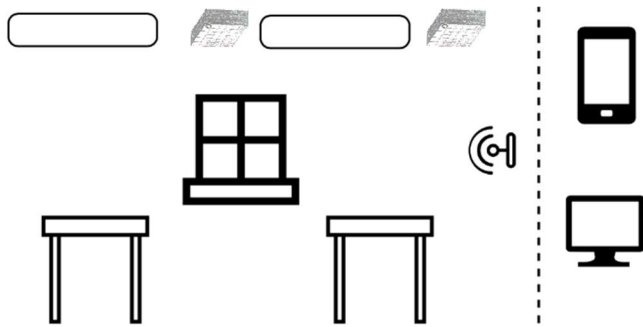


# PRODUCT DATASHEET

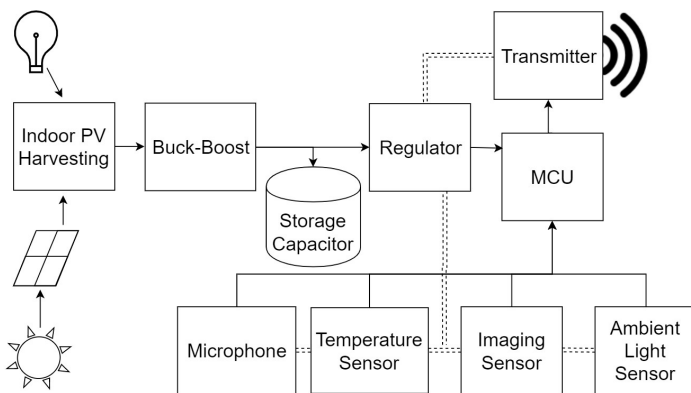
## Industry Standard Dimensions



## System Setup



## Components of System



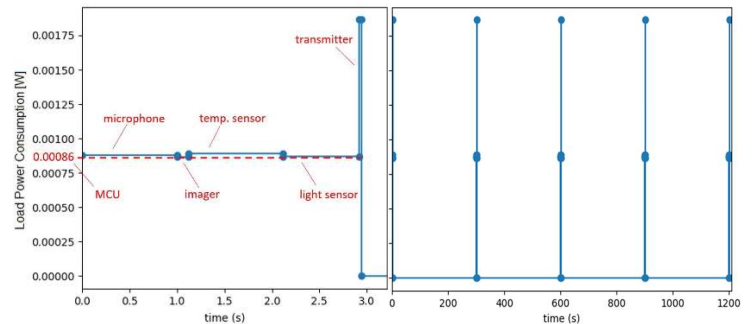
Type	Name	Volt [V]	Active Pow [uW]	Idle Pow [uW]
Microphone	ADMP803	0.9	15.3	9
Image sensor	Hanson_2009	0.5	1.2	0.7
Temp sensor	TSYS02D	1.5	27	0.03
Light sensor	OPT3001DNPR	1.6	5.92	0.48
MCU	PIC16F1503	1.8	864	0.468

## Specifications

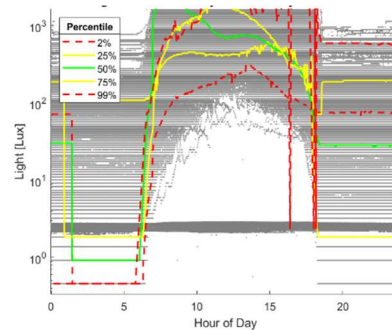
<b>Classification:</b>	Sensing System
<b>Energy Storage:</b>	Aluminum Electrolytic Capacitor
<b>Nominal Voltage:</b>	3.0 Volts
<b>Max Load Power:</b>	1.86 mW
<b>Max Load Current:</b>	1.03 mA
<b>Storage Temp:</b>	-40°C to 85°C (-40°F to 185°F)
<b>Operating Temp:</b>	-5°C to 65°C (-23°F to 150°F)
<b>Dimensions</b>	8 x 8 x 2 cm

## Typical Operation

### Power Consumption of Load



### Indoor Light Traces



Data courtesy of the Intel Berkeley Lab (containing >5 million data points from sensors in 54 locations). The Lux values for each day were averaged, and the days with average Lux values larger than 2, 25, 50, 75, and 99% of the daily Lux averages

### Capacitor Voltage (based on percentile traces above)

